



**Digital Photo Printer  
CHC-S1245**

**Printer Driver Version 3  
Instruction Manual**

**Contents**

Using your printer with Windows computers -----	1
System requirements -----	1
Notes-----	2
Installing the printer driver for Windows XP -----	3
Uninstalling the printer driver for Windows XP -----	8
Installing the printer driver for Windows Vista -----	9
Uninstalling the printer driver for Windows Vista-----	13
Installing the printer driver for Windows 7 -----	17
Uninstalling the printer driver for Windows 7-----	22
Printing from application software -----	27
To cancel printing -----	31
Color adjustment-----	32
Split Print-----	36
Troubleshooting -----	38

# SHINKO ELECTRIC CO., LTD. SOFTWARE LICENSE AGREEMENT

## **IMPORTANT**

**READ THIS AGREEMENT CAREFULLY BEFORE USING THE SOFTWARE ON THE CD-ROM SUPPLIED WITH THE PRINTER.**

**BY USING THIS SOFTWARE, YOU AGREE TO BE BOUND BY THE TERMS OF THIS AGREEMENT.**

**IF YOU DO NOT AGREE TO THE TERMS AND CONDITIONS OF THIS AGREEMENT, DO NOT USE THE SOFTWARE INCLUDING THE DOCUMENTS ON THE CD-ROM PROVIDED, AND PROMPTLY RETURN THE WHOLE PRODUCT TO YOUR DEALER.**

## **1. LICENSE**

SHINKO ELECTRIC CO., LTD. ("SHINKO") grants you the non-exclusive right to use one copy of the SOFTWARE under the terms and conditions of this Agreement.

## **2. RESTRICTIONS ON USE**

You may use the SOFTWARE on a single computer. You may not modify, reverse engineer, decompile, or disassemble the SOFTWARE.

## **3. DISCLAIMER OF WARRANTY**

This SOFTWARE is provided to you "AS IS" and without any warranty and liability of any kind.

SHINKO, its licensors or suppliers do not warrant that the functions contained in the SOFTWARE will meet your requirements or that the operation of the SOFTWARE will be uninterrupted or error free.

## **4. LIMITATION OF LIABILITY**

In no event will SHINKO, its licensors or suppliers be liable to you for any consequential, indirect, incidental, punitive or special damages, including any lost profits or lost savings, or other damages arising from the use or inability to use the SOFTWARE even if advised of the possibility of such damages.

Some States or jurisdictions do not allow the exclusion or limitation of incidental or consequential damages, so the above limitations may not apply to you.

## **5. TERM; TERMINATION**

This license is effective until terminated. You may terminate this license at any time by destroying the SOFTWARE and all copies in any form. This license will terminate without notice to you if you fail to comply with any term or condition of this license. Upon termination you must destroy the SOFTWARE and all copies in any form.

## **6. EXPORT RESTRICTIONS**

You agree to comply fully with all international and national laws and regulations that apply to the SOFTWARE, and your use thereof, including, but not limited to, end-user, end-use and destination restrictions issued by Japanese and other governments. Without limiting the generality of the foregoing, you agree not to export, directly or indirectly, re-export, divert, or transfer the SOFTWARE or any direct product thereof to any destination, company or person restricted or prohibited by national and international laws or regulations or laws or regulations of any other applicable jurisdiction.

# Using your printer with Windows computers

The supplied CHC-S1245 printer driver enables you to print an image stored on your computer with the CHC-S1245 digital photo printer. To print an image from the computer, you need appropriate application software that can open the image and print with the printer.

## System requirements

To use the supplied printer driver, you need a computer that meets the following system requirements:

OS: Windows XP Home Edition SP3 / Windows XP Professional SP3 (32 bit)  
Windows Vista SP1 (32bit)  
Windows 7 (32bit)

CPU: Pentium 300 MHz or better (Windows XP Home Edition / Windows XP Professional)  
x86 processor 1 GHz or better (Windows Vista / Windows 7)

RAM: 128 MB or more (Windows XP Home Edition / Windows XP Professional)  
512 MB or more (Windows Vista Home Basic)  
1 GB or more (Windows Vista Home Premium / Business / Ultimate / Windows 7)

Disk free space: 1.5 GB or more (Windows XP Home Edition / Windows XP Professional)  
15 GB or more (Windows Vista)  
16 GB or more (Windows 7)

Port: A built-in USB port on the personal computer.

CD-ROM drive: For software installation.

## Notes

- (1) Be sure to connect the printer directly to your computer. Connecting it via a USB hub may cause the printer to not operate properly.
- (2) Do not use the printer together with other USB devices except a USB keyboard or mouse.
- (3) Do not connect two or more CHC-S1245 digital photo printers at the same time.
- (4) Do not unplug the USB cable during data transferring or printing. To do so may cause the printer to not operate properly.
- (5) The printer driver cannot be used for network printer.
- (6) Microsoft and Windows are either registered trademarks or trademarks of Microsoft Corporation.
- (7) Other names and products not mentioned above may be registered trademarks or trademarks of their respective companies.
- (8) If you have any questions or problems please contact [chc-master@tokyo.shinko-elec.co.jp](mailto:chc-master@tokyo.shinko-elec.co.jp)

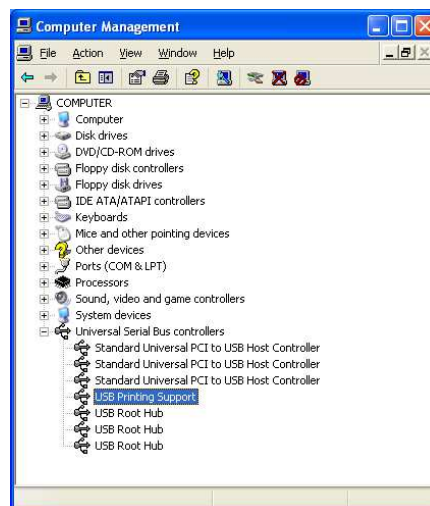
# Installing the printer driver for Windows XP

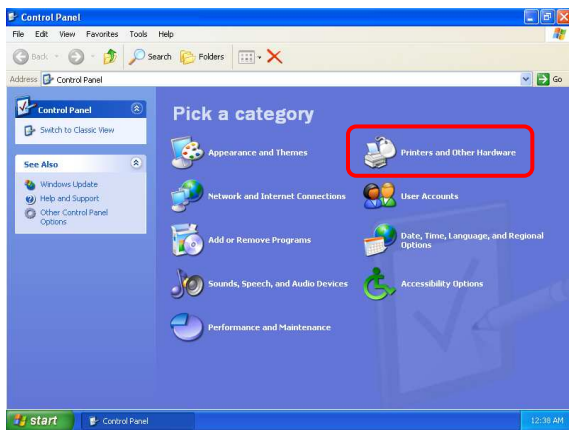
## NOTES

- (1) Make sure that the printer is not connected to the computer.
- (2) The explanations in this section are based on Windows XP. On another version of Windows, the actual screen contents and procedures may vary from those shown.

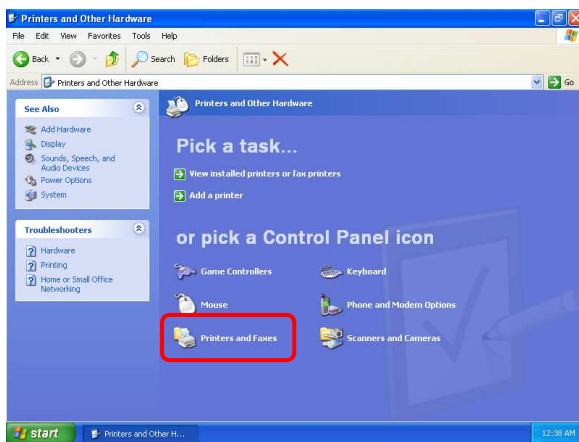
1. Turn on your computer and start Windows.
2. Be sure to log on with "Administrator" privileges.
3. Be sure to close all running programs before installing the software.
4. Turn the printer on.
5. Connect the printer to your computer, using the USB cable.

When connection is established, USB printing support is automatically enabled by Device Manager.

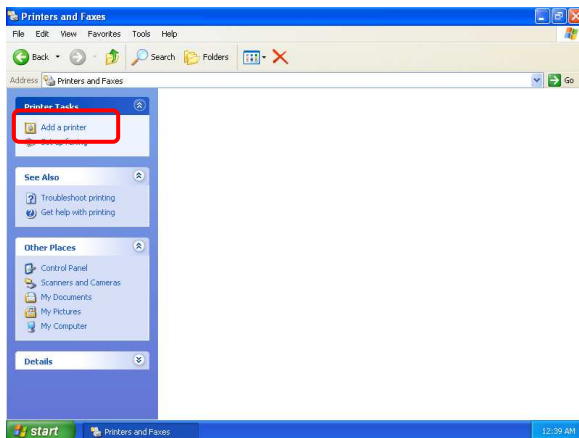




6. Open the Control Panel window from Windows Start menu, and then click "Printers and Other Hardware".



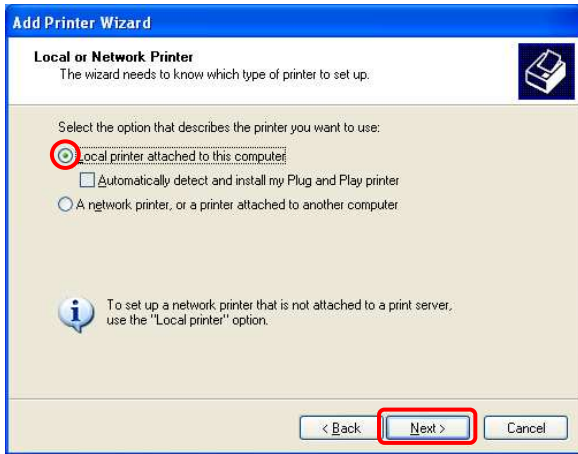
7. Click "Printers and Faxes".



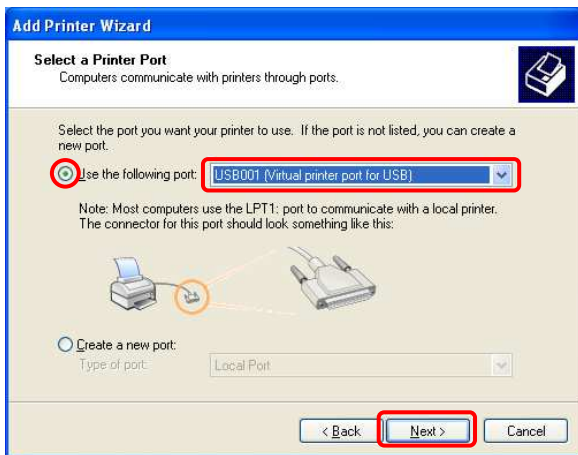
8. Click "Add a printer".



9. Click "Next".



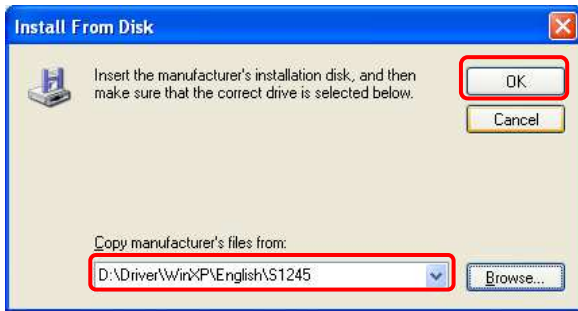
10. Select "Local printer attached to this computer" and uncheck "Automatically detect and install my Plug and Play printer", and then click "Next".



11. Select "USB\*\*\* (Virtual printer port for USB)" at "Use the following port", and then click "Next".



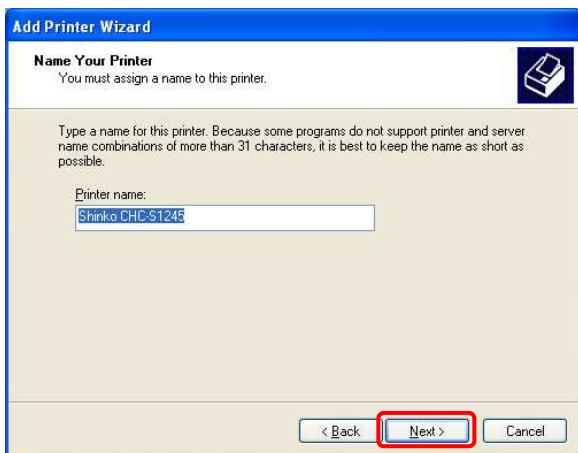
12. Click "Have Disk..."



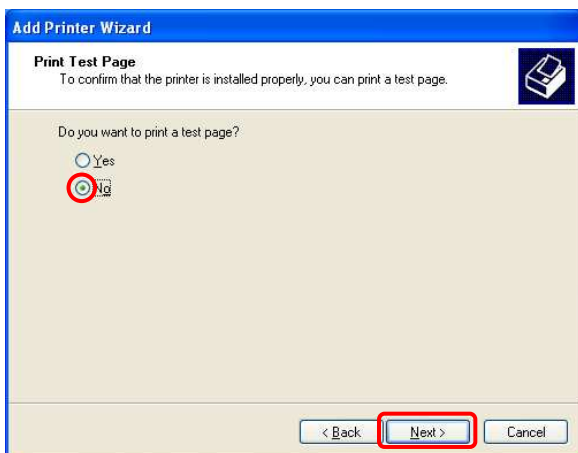
13. Insert the Printer Driver CD-ROM.  
Click "Browse..." to select the "S1245" subfolder under the folder for each version of Windows.  
For Windows XP:  
"D:\Driver\WinXP\English\S1245"



14. Select "Shinko CHC-S1245", and then click "Next".

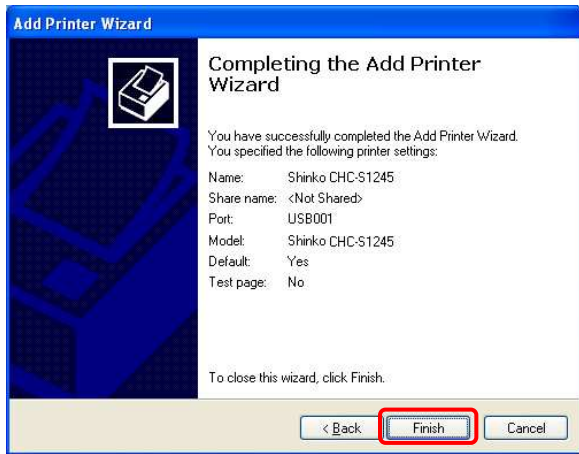


15. Click "Next".



16. Select "No", and then click "Next".

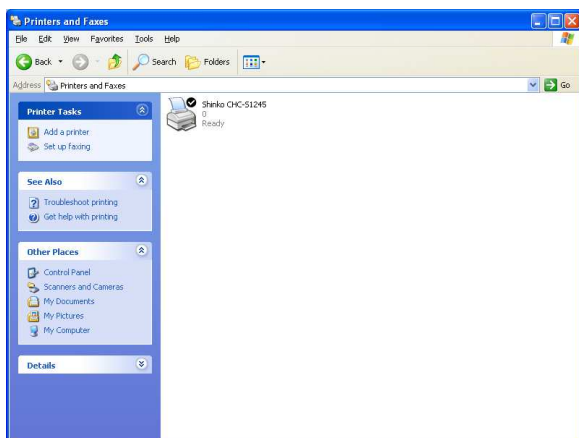




17. Click "Finish".



18. Click "Continue Anyway".



19. The "Shinko CHC-S1245" printer icon appears in the "Printers and Faxes" window.

# Uninstalling the printer driver for Windows XP

To uninstall the printer driver, follow the procedures below.

1. Unplug the USB cable from your computer.
2. Select "Printers and Faxes" from the Windows Start menu.
3. Right-click on the "Shinko CHC-S1245" printer icon and select "Delete" from the pop-up menu.
4. Click "Yes" for "Are you sure you want to delete the printer 'Shinko CHC-S1245'?" in the dialog box.  
The relevant files in the system will be deleted.
5. Click "Server Properties" in the "File" menu.
6. Select the "Drivers" tab, select "Shinko CHC-S1245", and then click "Remove".
7. Click "Yes" for "Are you sure you want to delete Shinko CHC-S1245?" in the dialog box.
8. Open the Run window from Windows Start menu, and then type "regedit" and click "OK".
9. Delete the folder of  
"HKEY\_LOCAL\_MACHINE\SYSTEM\CurrentControlSet\Control\Print\Monitors\S1245 Language Monitor".
10. Click "Yes" for "Are you sure you want to delete this key and all of its subkeys?" in the dialog box.
11. Reboot your computer.

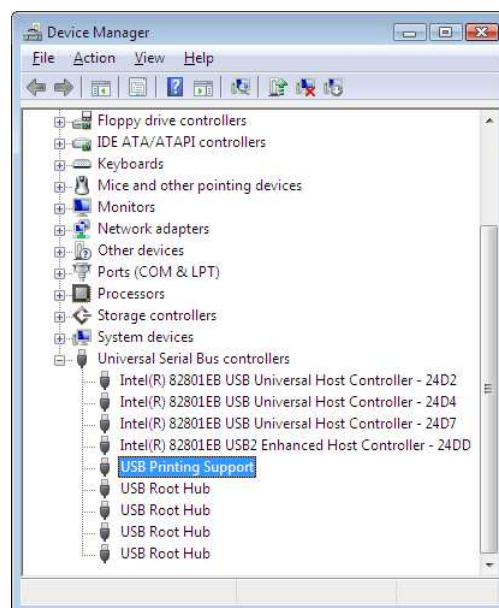
# Installing the printer driver for Windows Vista

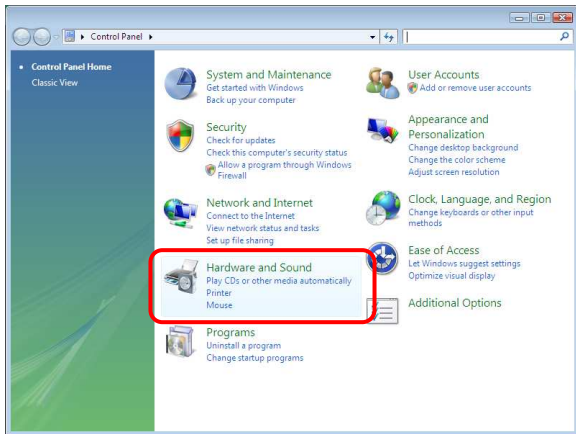
## NOTES

- (1) Make sure that the printer is not connected to the computer.
- (2) The explanations in this section are based on Windows Vista Business. On another edition of Windows Vista, the actual screen contents and procedures may vary from those shown.

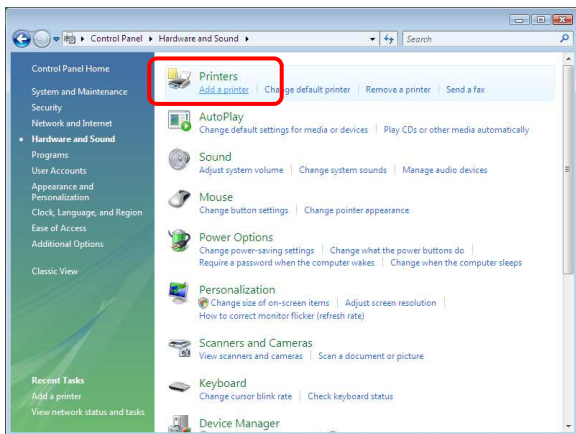
1. Turn on your computer and start Windows.
2. Be sure to log on with "Administrator" privileges.
3. Be sure to close all running programs before installing the software.
4. Turn the printer on.
5. Connect the printer to your computer, using the USB cable.

When connection is established, USB printing support is automatically enabled by Device Manager.

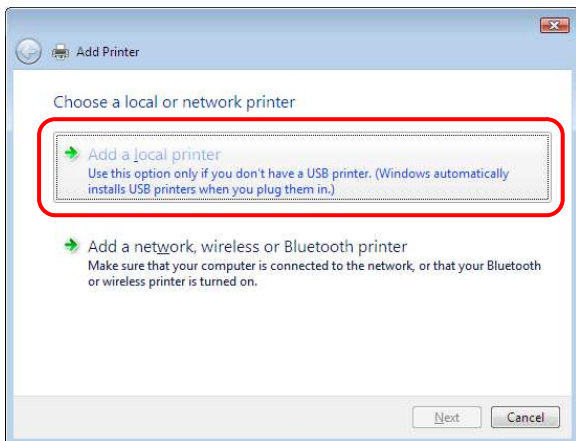




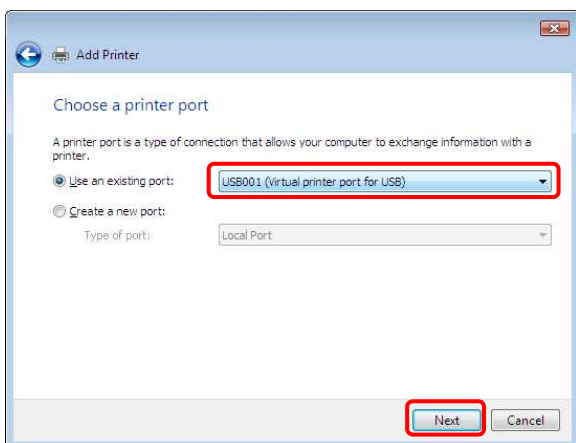
6. Open the Control Panel window from Windows Start menu, and then click "Hardware and Sound".



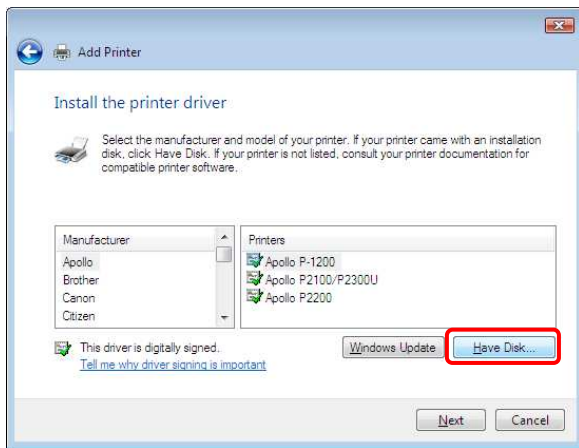
7. Click "Add a printer" from the "Printers".



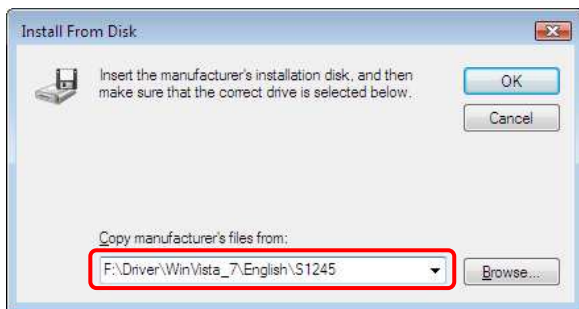
8. Click "Add a local printer".



9. Select "USB\*\*\* (Virtual printer port for USB)" at "Use an existing port:", and then click "Next".



10. Click "Have Disk...".

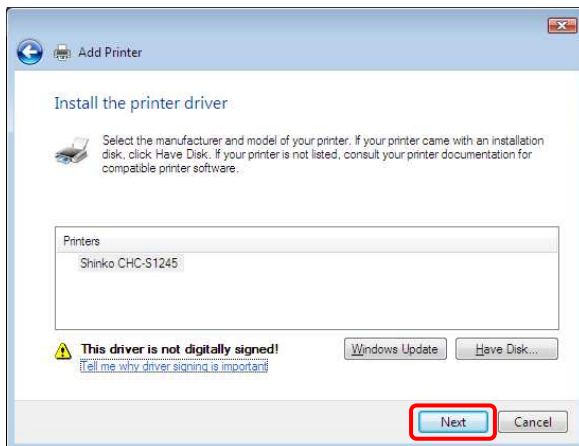


11. Insert the Printer Driver CD-ROM.

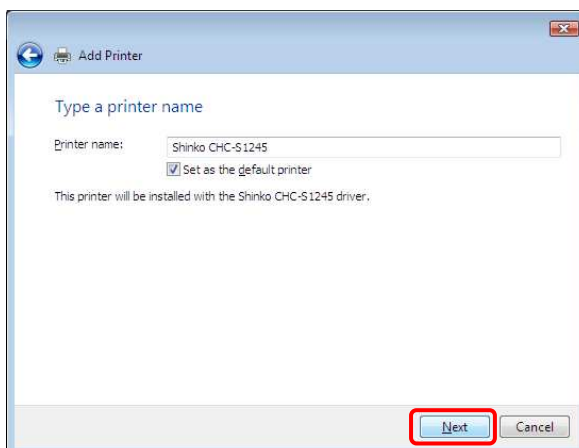
Click "Browse..." to select the "S1245" subfolder under the folder for Windows Vista.

For Windows Vista:

"F:\Driver\WinVista\_7\English\S1245"

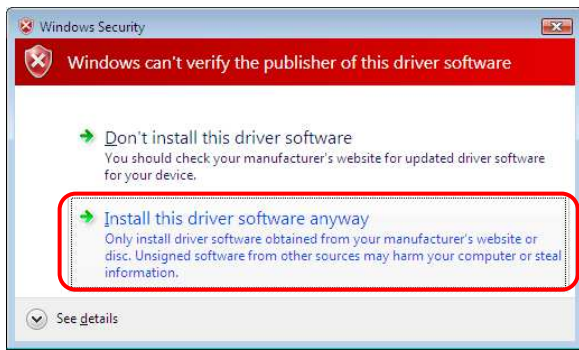


12. Click "Next".

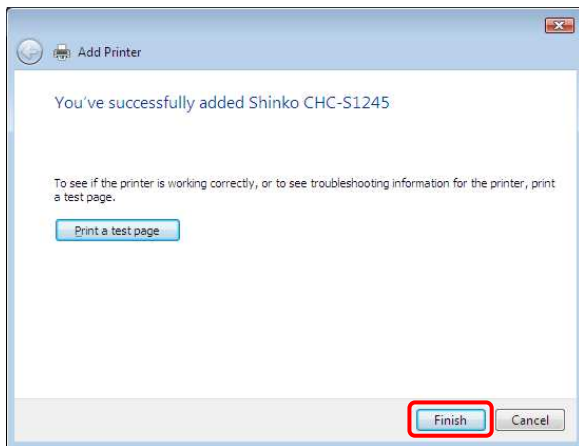


13. Click "Next".

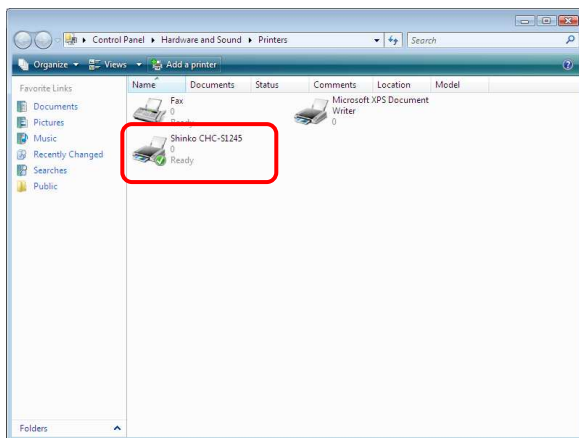
Note: User Account Control message may appear stating that the Windows needs your permission to continue. Click "Continue" to allow the driver to install.



14. Click "Install this driver software anyway".



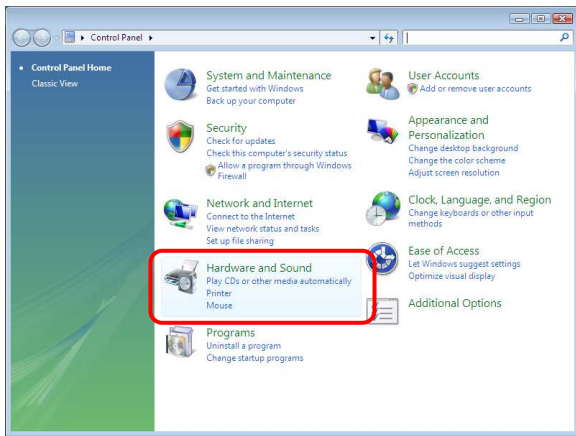
15. Click "Finish".



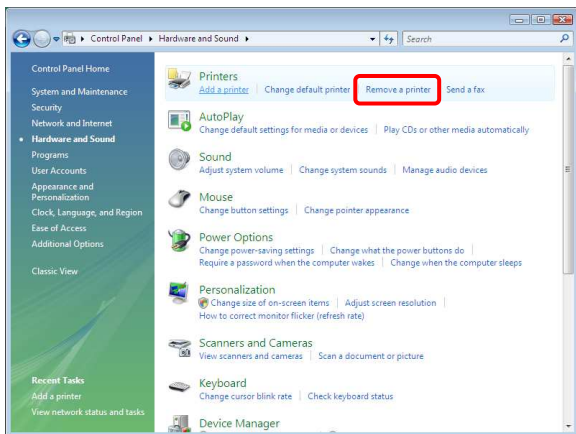
16. The "Shinko CHC-S1245" printer icon appears in the "Printers" window.

# Uninstalling the printer driver for Windows Vista

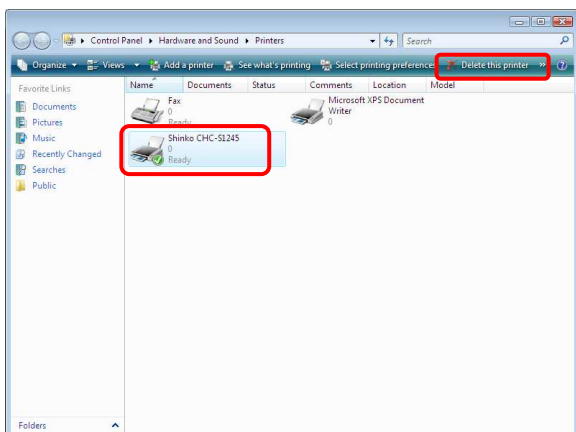
To uninstall the printer driver, follow the procedures below.



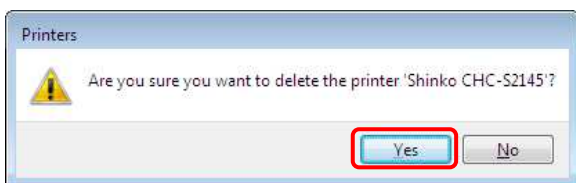
1. Unplug the USB cable from your computer.
2. Open the Control Panel window from Windows Start menu, and then click "Hardware and Sound".



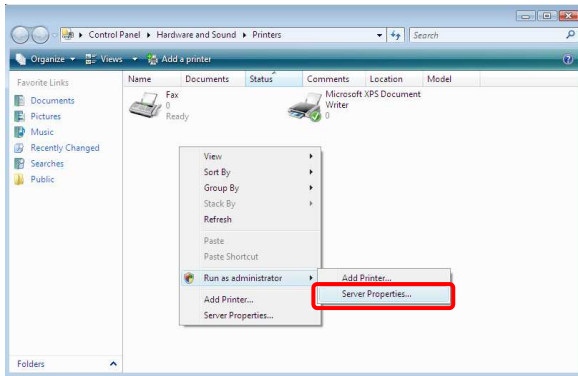
3. Click "Remove a printer" from the "Printers".



4. Select "Shinko CHC-S1245" icon, and then Click "Delete this printer".

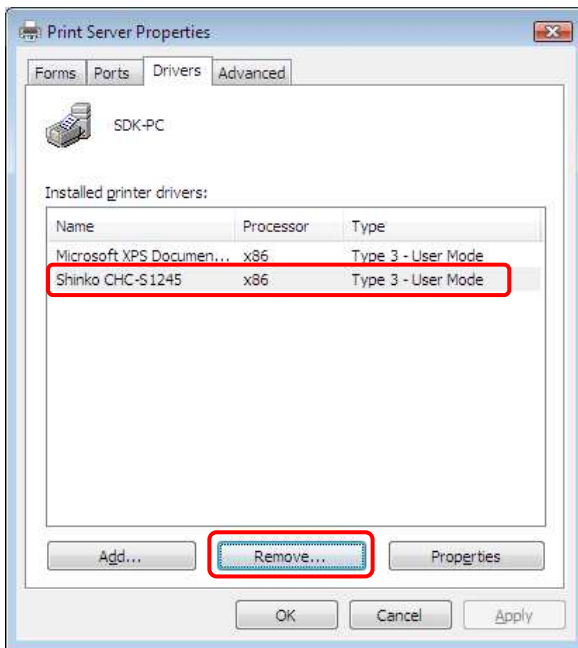


5. Click "Yes".



6. Right-click on the "Printers" window, and select "Run as administrator", and then click "Server Properties..."

Note: User Account Control message may appear stating that the Windows needs your permission to continue. Click "Continue" to allow the driver to install.

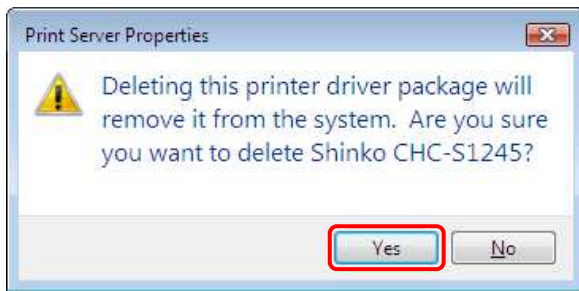


7. Select the "Drivers" tab, select "Shinko CHC-S1245", and then click "Remove..."

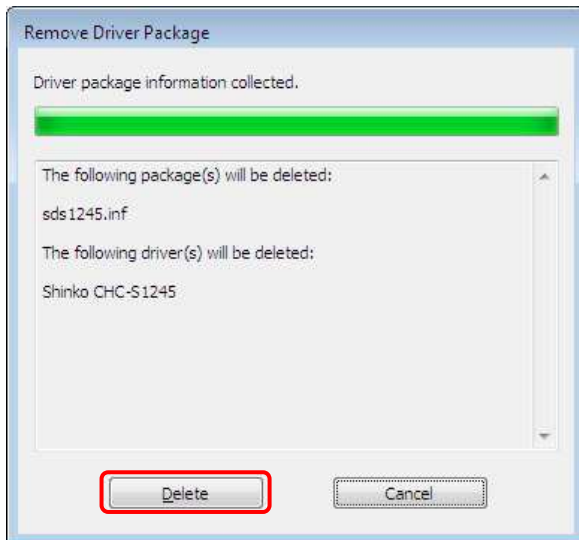


8. Select "Remove driver and driver package.", and then click "OK".

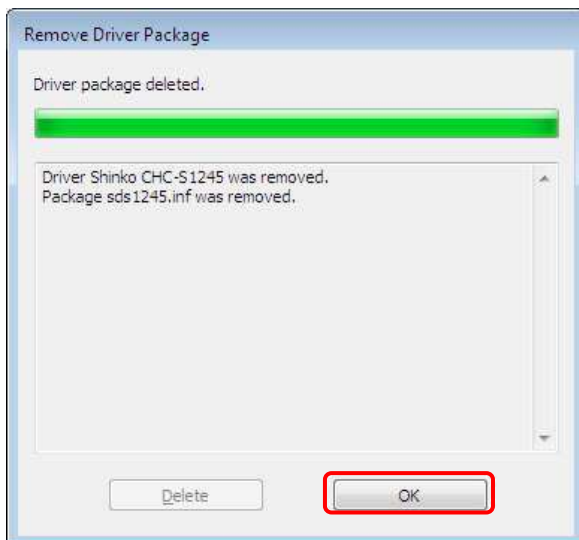




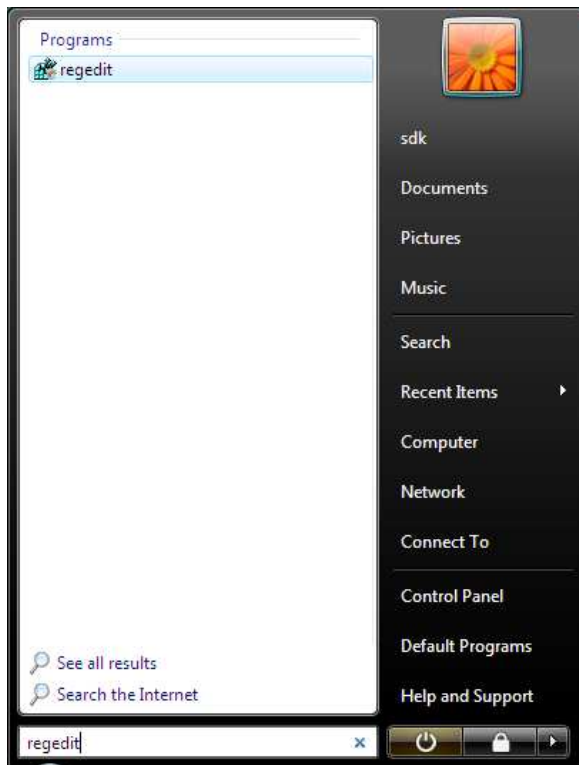
9. Click "Yes".



10. Click "Delete".



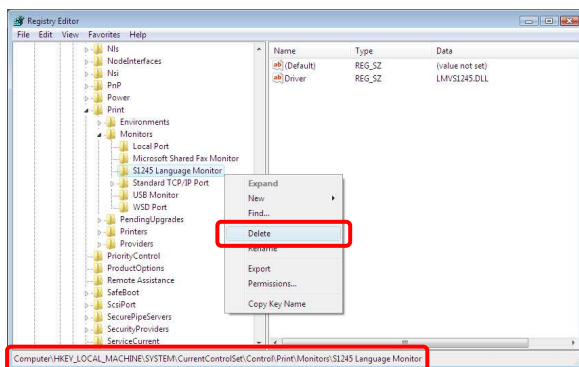
11. Click "OK".



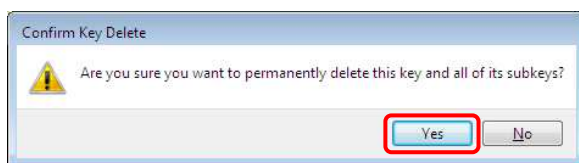
12. Open the Start Search from Windows Start menu, and then type "regedit" and press the "Enter" key.

Note: User Account Control message may appear stating that the Windows needs your permission to continue. Click "Continue" to allow the driver to uninstall.

13. Click "Continue".



14. Right-click on the folder of "HKEY\_LOCAL\_MACHINE\SYSTEM\CurrentControlSet\Control\Print\Monitors\S1245 Language Monitor", and then click "Delete".



15. Click "Yes".

16. Reboot your computer.

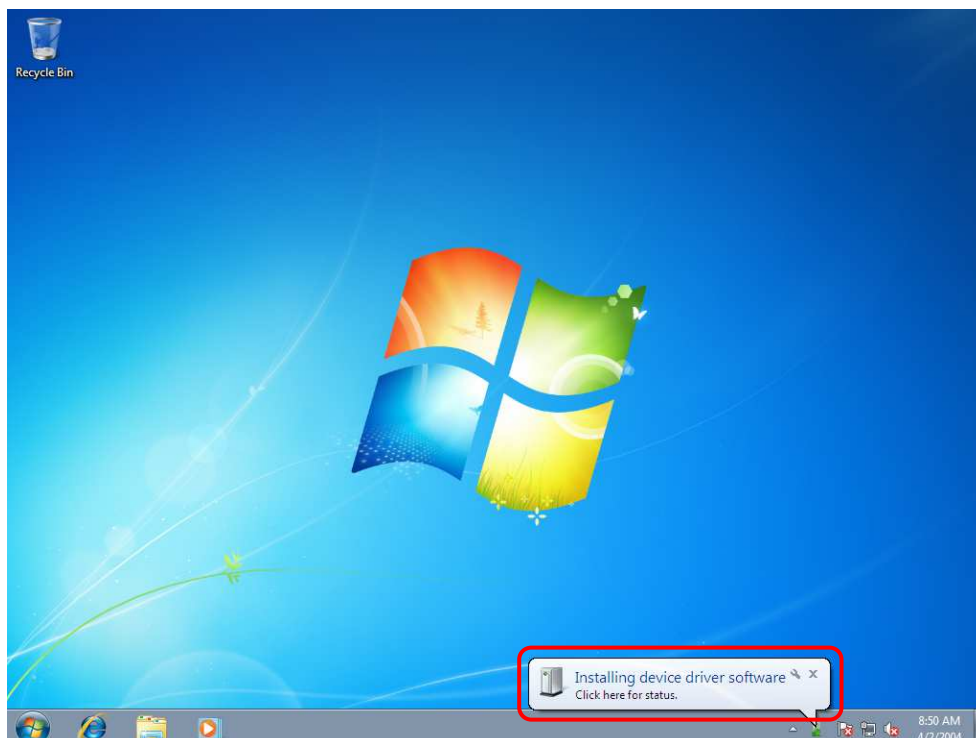
# Installing the printer driver for Windows 7

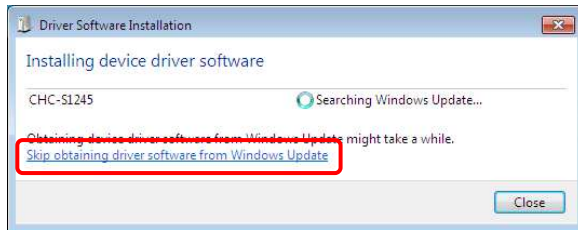
## NOTES

- (1) Make sure that the printer is not connected to the computer.
- (2) The explanations in this section are based on Windows 7 Home Premium. On another edition of Windows 7, the actual screen contents and procedures may vary from those shown.

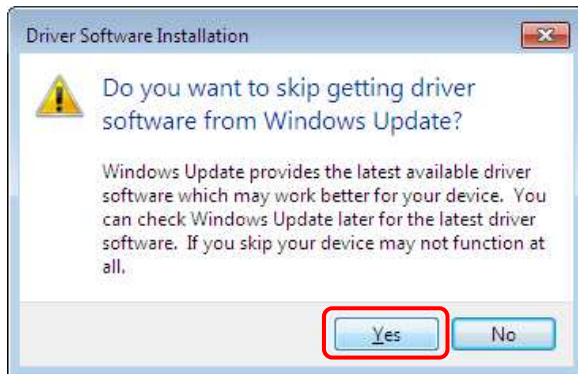
1. Turn on your computer and start Windows.
2. Be sure to log on with "Administrator" privileges.
3. Be sure to close all running programs before installing the software.
4. Turn the printer on.
5. Connect the printer to your computer, using the USB cable.

When connection is established, the following balloon tip appears automatically on the taskbar. Click the balloon tip.

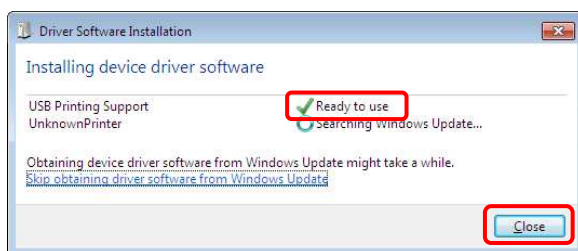




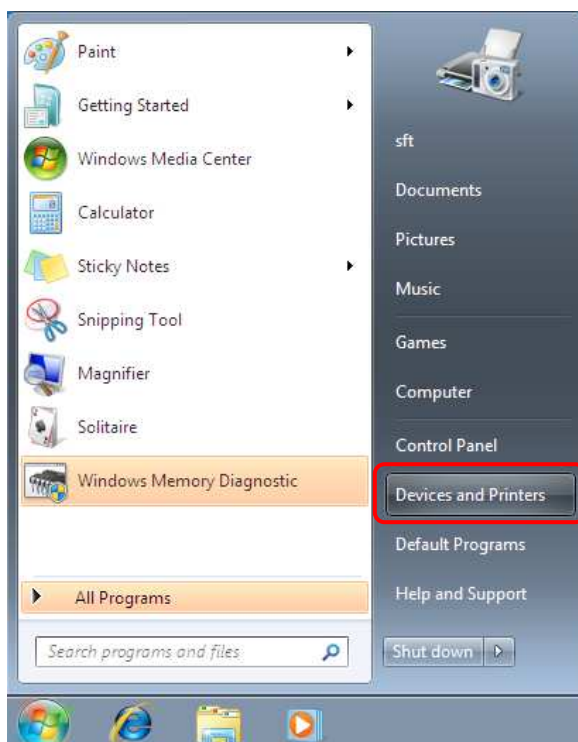
6. Click "Skip obtaining driver software from Windows Update".



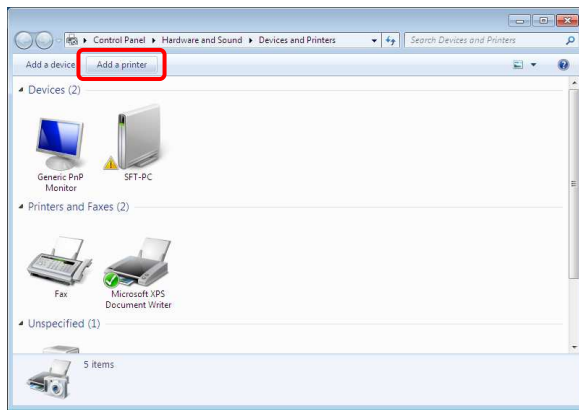
7. Click "Yes".



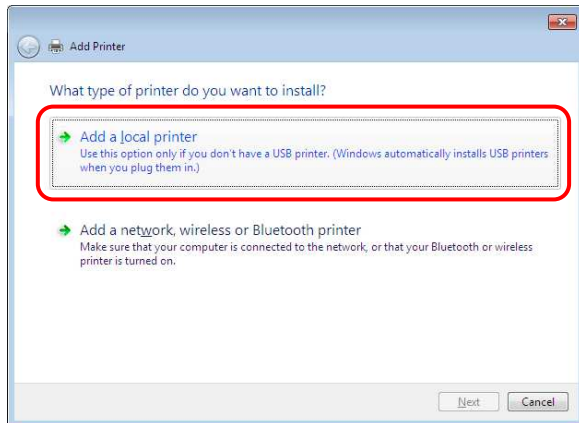
8. Wait until the "Ready to use" appears on the right of "USB Printing Support", and then click "Close".



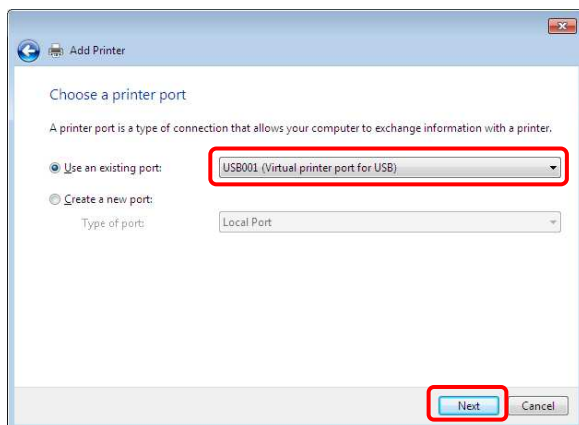
9. Click "Devices and Printers" from Windows Start menu.



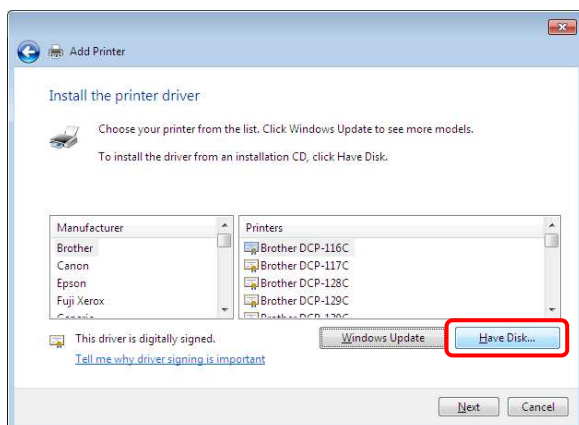
10. Click "Add a printer".



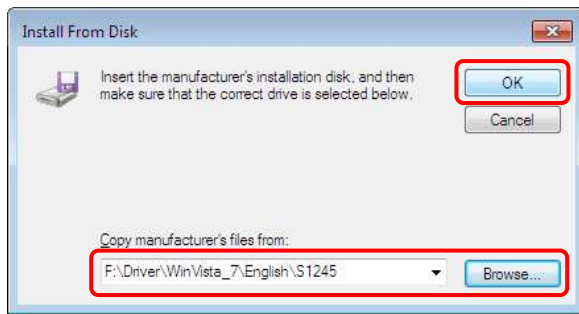
11. Click "Add a local printer".



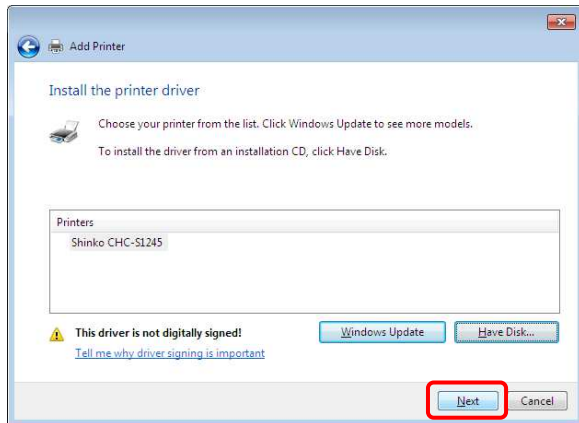
12. Select "USB\*\*\* (Virtual printer port for USB)" at "Use an existing port:", and then click "Next".



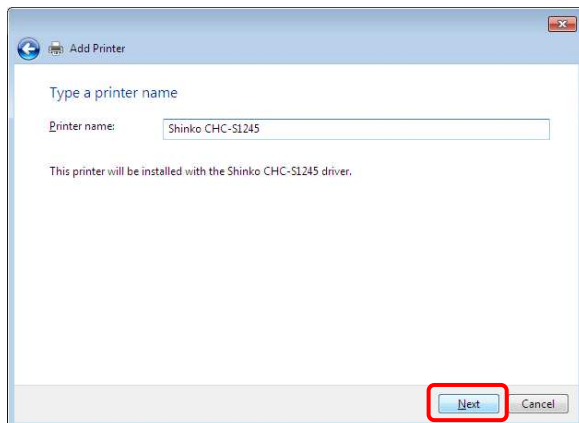
13. Click "Have Disk..."



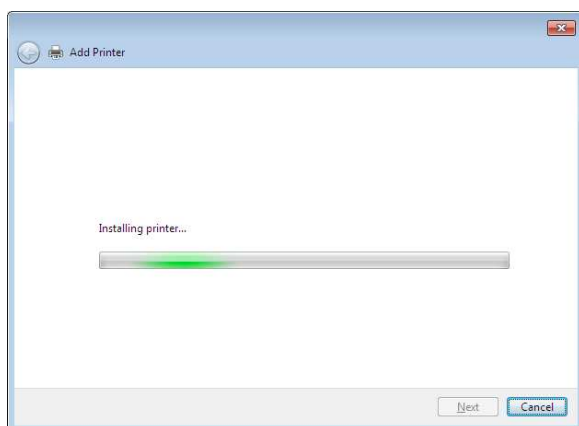
14. Insert the Printer Driver CD-ROM.  
Click "Browse..." to select the "S1245" subfolder under the folder for Windows 7.  
For Windows 7:  
"F:\Driver\WinVista\_7\English\S1245"  
Click "OK".



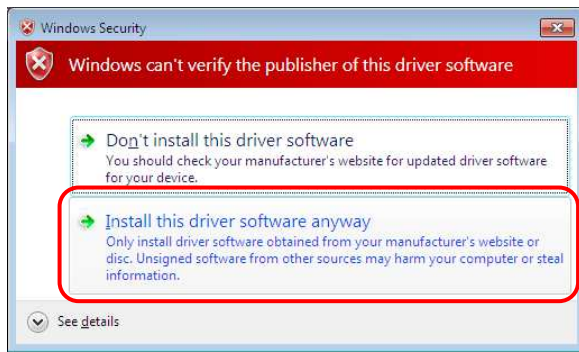
15. Click "Next".



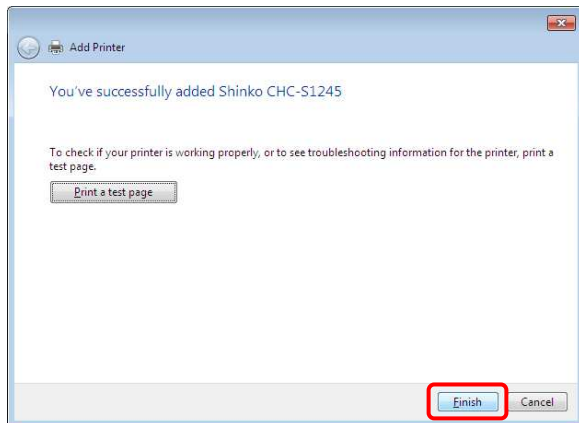
16. Click "Next".



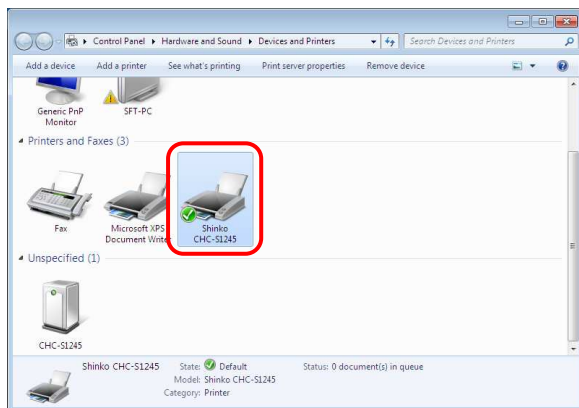
17. Installing printer...



18. Click "Install this driver software anyway".



19. Click "Finish".



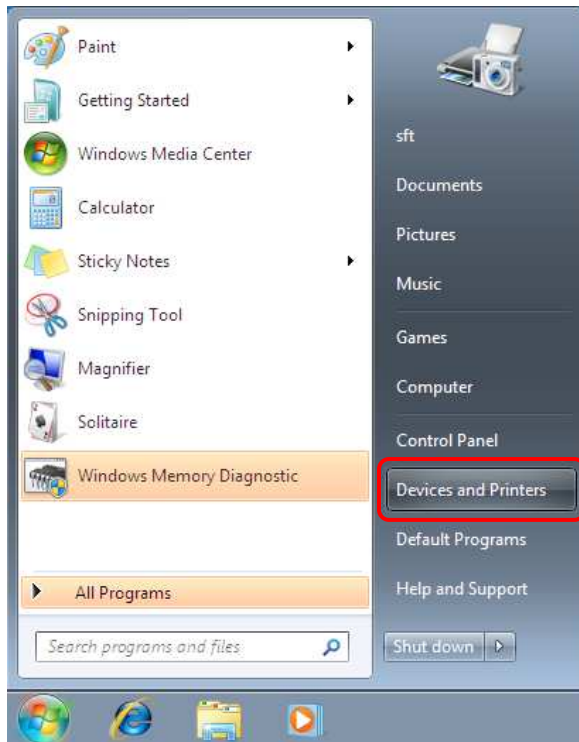
20. The "Shinko CHC-S1245" printer icon appears in the "Devices and Printers" window.

21. Eject the Printer Driver CD-ROM from the CD-ROM drive.

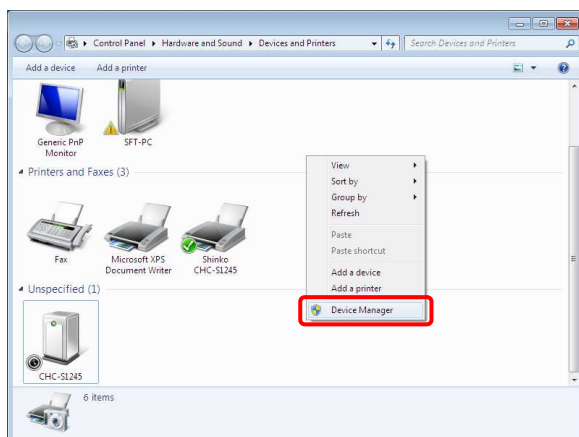
# Uninstalling the printer driver for Windows 7

To uninstall the printer driver, follow the procedures below.

1. Turn the printer on.
2. Connect the printer to your computer, using the USB cable.

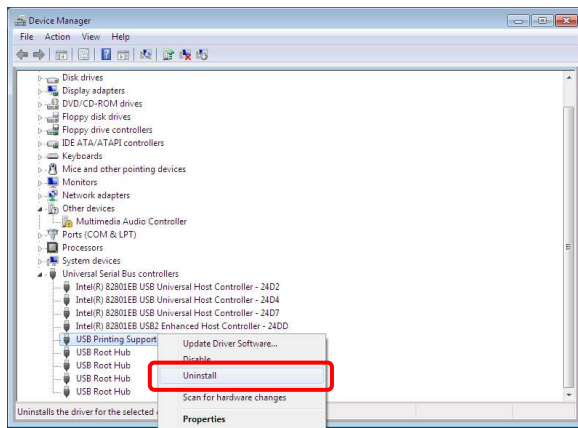


3. Click "Devices and Printers" from Windows Start menu.

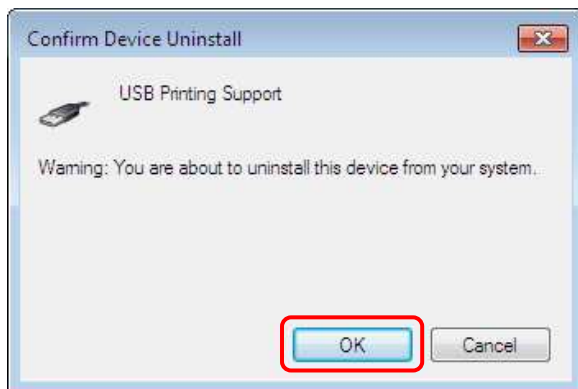


4. Right-click on the "Devices and Printers" window, and then click "Device Manager".



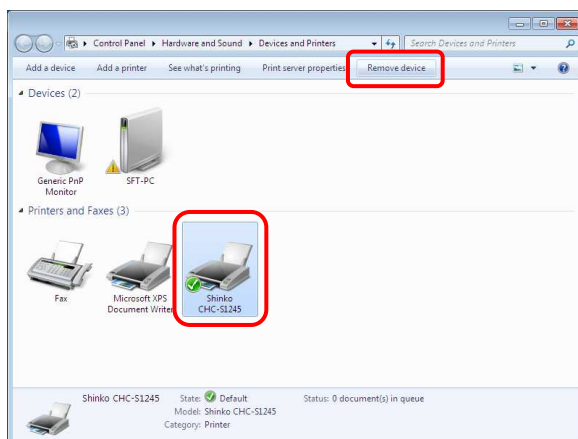


5. Right-click on the "USB Printing Support", and then click "Uninstall".

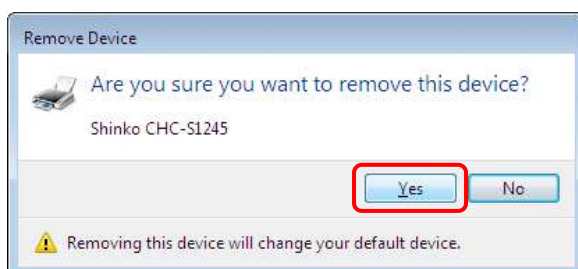


6. Click "OK".

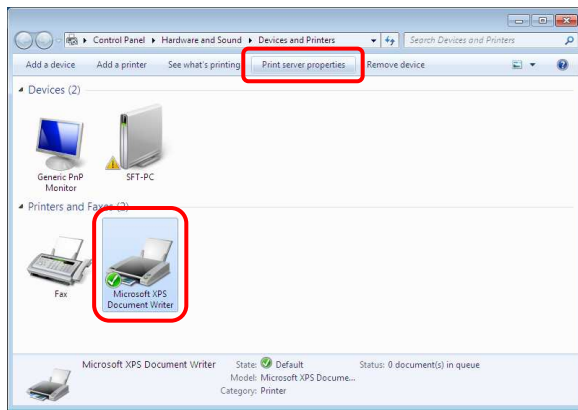
7. Unplug the printer from your computer.



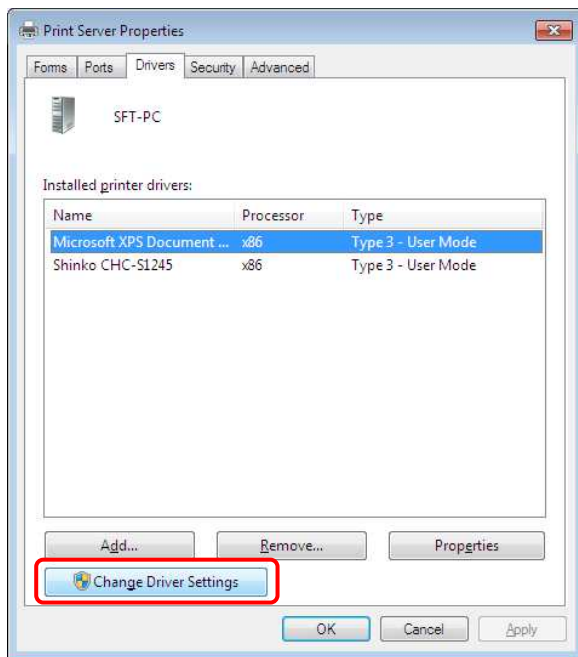
8. Select "Shinko CHC-S1245" icon, and then click "Remove device".



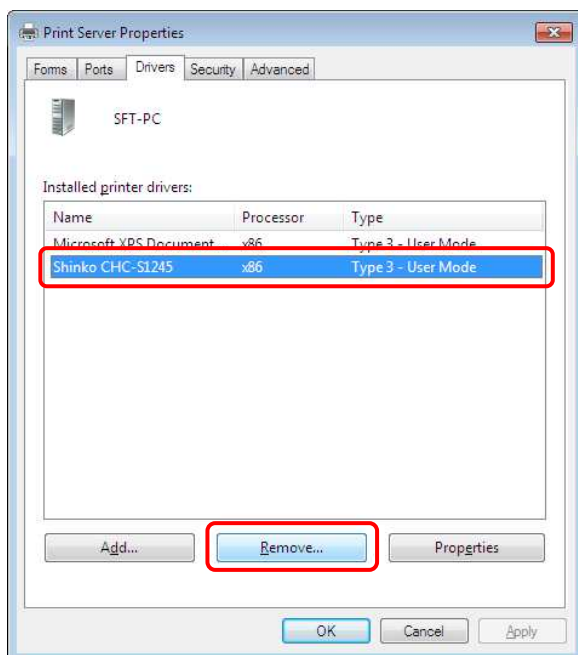
9. Click "Yes".



10. Select an icon from the "Devices and Printers" window, and then click "Printer server properties".



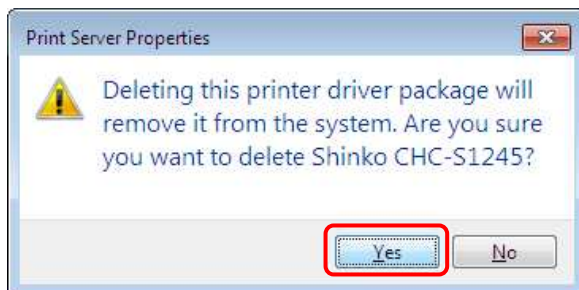
11. Select the "Drivers" tab, and then click "Change Driver Settings".



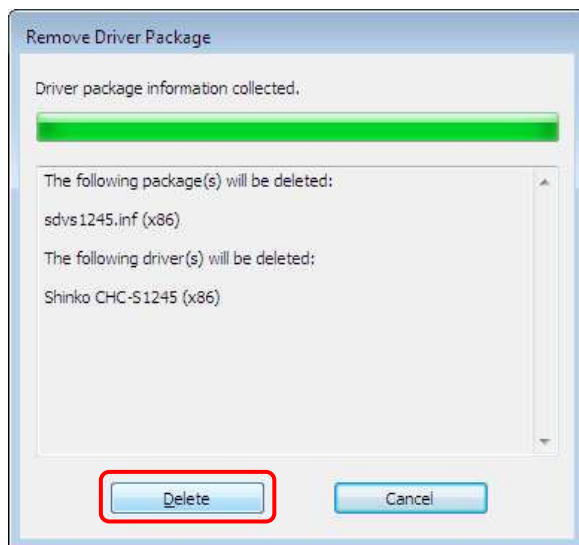
12. Select "Shinko CHC-S1245", and then click "Remove...".



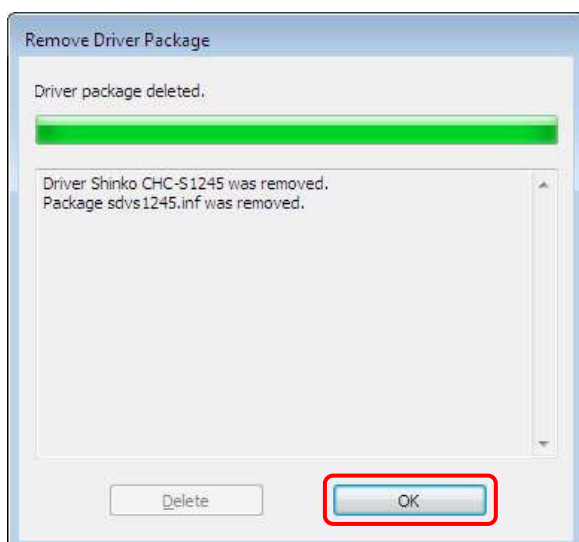
13. Select "Remove driver and driver package", and then click "OK".



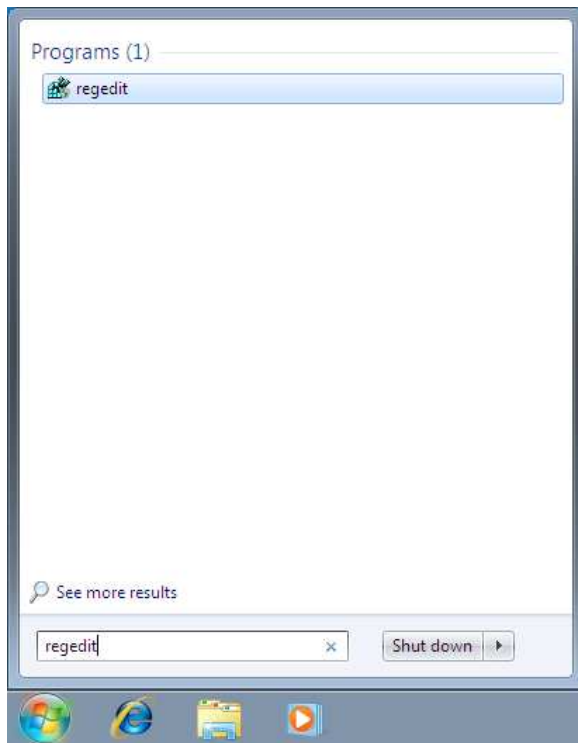
14. Click "Yes".



15. Click "Delete".

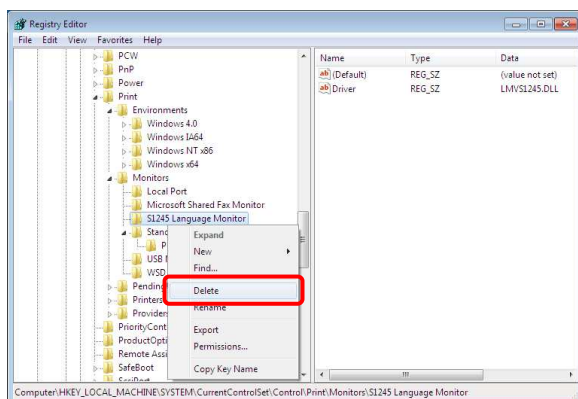


16. Click "OK".

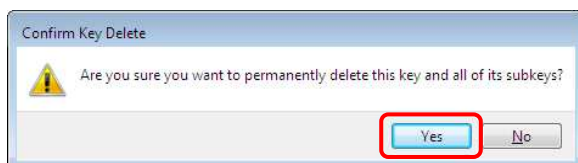


17. Open the Start Search from Windows Start menu, and then type "regedit" and press the "Enter" key.

Note: User Account Control message may appear stating that the Windows needs your permission to continue. Click "Yes" to allow the driver to uninstall.



18. Right-click on the folder of "HKEY\_LOCAL\_MACHINE\SYSTEM\CurrentControlSet\Control\Print\Monitors\S1245 Language Monitor", and then click "Delete".



19. Click "Yes".

20. Reboot your computer.

## Printing from application software

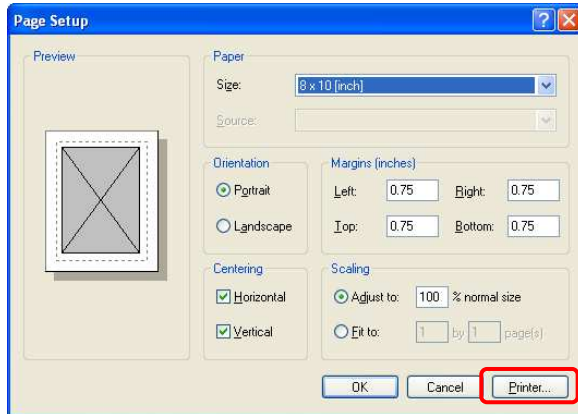
You can use the "Print" command of application software to print an image from your computer with CHC-S1245 digital photo printer.

### NOTES

- (1) Before printing, make sure that the printer is properly connected to your computer with a proper USB cable.
- (2) This section describes setting up the driver and printing from the Windows "Paint" program as typical application software.
- (3) The explanation in this section is based on Windows XP.
- (4) The maximum image size for each paper size is as follow.

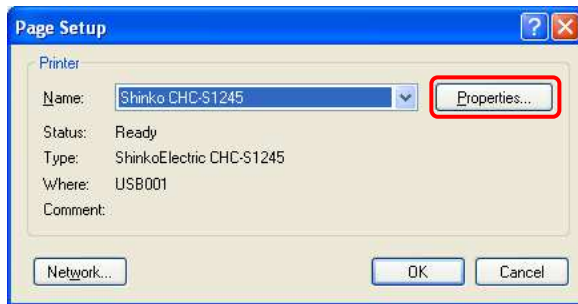
Paper size selected	Maximum image size in pixel units
8 x 10 [inch]	2,446 x 3,036
8 x 10 [inch] (Split print)	2,446 x 3,070
8 x 8 [inch]	2,446 x 2,436
8 x 8 [inch] (Split print)	2,446 x 2,468
8 x 6 [inch]	2,446 x 1,831
8 x 5 [inch]	2,446 x 1,530
8 x 4 [inch]	2,446 x 1,229
8 x 12 [inch]	2,446 x 3,636
8 x 12 [inch] (Split print 2UP)	2,446 x 3,672
8 x 12 [inch] (Split print 3UP)	2,446 x 3,707

1. Start the application software, and open the image to print.
2. Click "Page Setup" from the "File" menu of the application.  
The "Page Setup" dialog box appears.



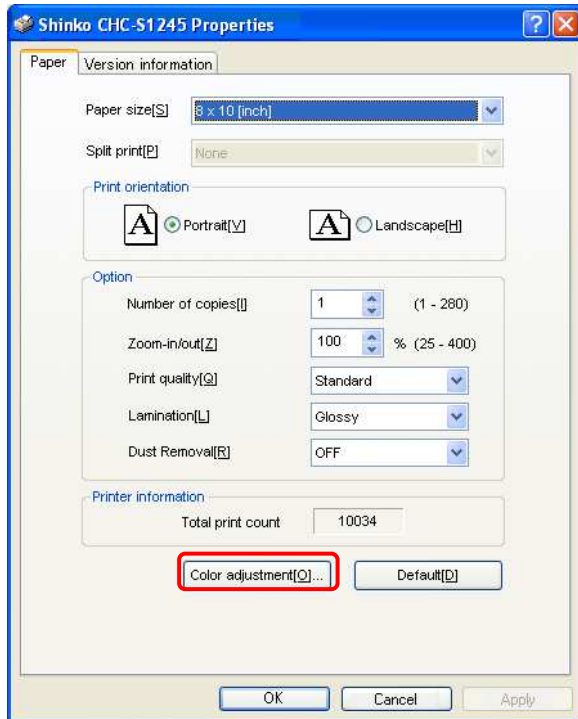
3. Page Setup.  
Your application software may show a different appearance.

3-1. Click "Printer..." to show the "Page Setup" dialog box.



3-2. Select " Shinko CHC-S1245"

3-3. Click "Properties..." to show the "Shinko CHC-S1245 Properties" dialog box.



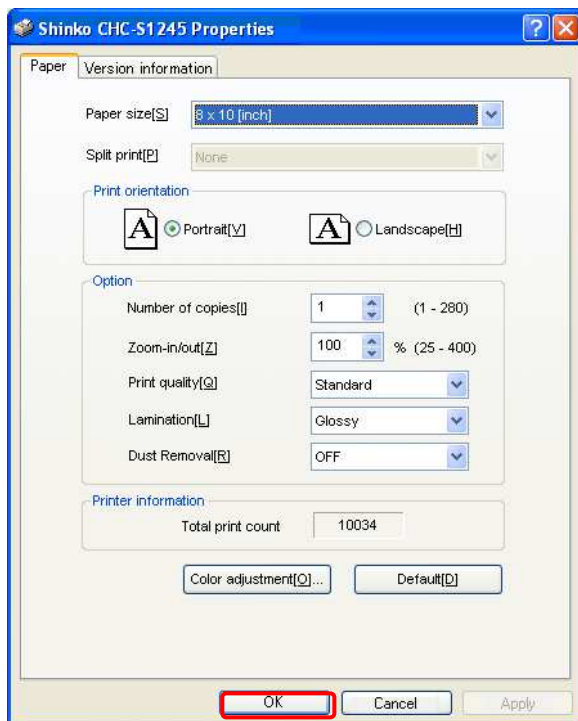
- 3-4. Paper size  
Choose a paper size you want to print.
- 3-5. Split print  
When you use the "Split Print" function, select a combination of finished print size.
- 3-6. Print orientation  
Select the Print orientation of an image either from "Portrait" or "Landscape".
- 3-7. Number of Copies  
Set the number of copies.  
*Effective Range: 1 ~ 280 (Default: 1)*
- 3-8. Zoom In / Out  
Set percentage at "Zoom in / out".  
The origin for image scaling is on the center.  
*Effective Range: 25 ~ 400 (Default: 100)*
- 3-9. Print quality  
Choose a print quality from "Standard" or "Fine". Selecting "Fine" provides the finest printing result while "Standard" provides the fastest printing of the printer.
- 3-10. Lamination  
Choose a lamination of prints from "Glossy" or "Matte".
- 3-11. Dust Removal  
Switch dust removal mode "OFF" and "ON."
- 3-12. Total print count  
This item shows total print counts stored in the internal memory of the printer.



### 3-13. Color adjustment

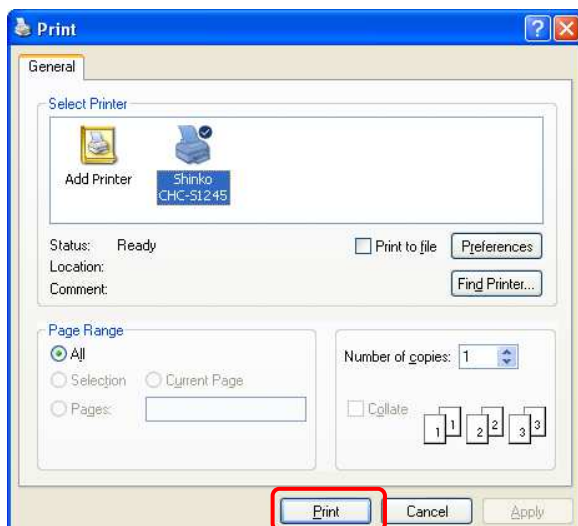
Clicking this button shows the "Color adjustment" window to adjust the prints.

See the section of "Color adjustment" in this document.



3-14. Click "OK" to return to the "Page Setup" dialog box.

3-11. Click "OK" to close the "Page Setup" dialog box.



4. Click "Print" from the "file" menu of the application software.  
The "Print" dialog box appears.

5. Click "Print" to start printing.

Click "Cancel" to cancel.



## To cancel printing

- When the application software shows the Print dialog box, click "Cancel".  
The print job will be canceled and the dialog box will be closed.
- When the print job has already entered into the print queue,
  1. Select "Settings" from the Windows Start menu, and then click "Printers and Faxes".
  2. Double-click on the "Shinko CHC-S1245" icon.  
The "Shinko CHC-S1245" window is displayed. The documents in the print queue are listed in the window.
  3. Click the document you want to cancel.
  4. Click "Cancel" in the "Document" menu.  
The document is removed from the list and the print job is canceled.  
For the details, refer to the Windows documentation.

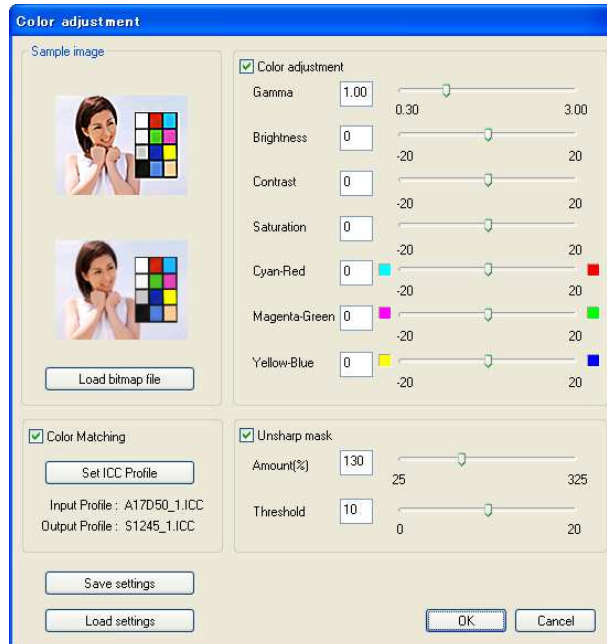
### NOTES

If printing has already started, do not cancel printing.  
Please wait until the printing is completed.

# Color adjustment

## Color adjustment window

You can select various kinds of printing options for color adjustment in the "Color adjustment" window.



## Sample image

The upper image will preview the effects of color adjustments.  
The lower image represents the original sample image.

### NOTES

The preview image shows the approximate effects of color adjustment and may not represent the actual printing result.

## Load bitmap file button

Clicking this button displays open dialog window to load a bitmap file to replace the default sample image.  
Acceptable bitmap file: 24-bit full color, 480(H) x 680(W) pixels or less.

## Color Matching checkbox

Checking this checkbox enables the color matching process for input images.

## Set ICC Profile button

Clicking this button displays the "Color Matching" window to allow you to define how the color matching applies to an input image.

## Input Profile:

The input ICC profile name is displayed to be used for the color matching process.

**Output Profile:**

The output ICC profile name is displayed to be used for the color matching process.

**Save settings button**

Clicking this button displays the open dialog window to save the settings of color adjustment to an external file.

**Load settings button**

Clicking this button displays the open dialog window to load the settings of color adjustment from an external file.

**Color adjustment checkbox**

Checking this checkbox enables every settings of "Color adjustment" option.

**Gamma editbox / slider bar**

This option adjusts the midtone of the print image. Drag the slider bar to the right to decrease the lightness of the midtone or to the left to increase it. You can also enter a value directly in the editbox.

*Adjustable range: 0.30 ~ 3.00 (Default: 1.00)*

**Brightness editbox / slider bar**

This option adjusts the brightness of the print image. Drag the slider bar to the right to increase the brightness or to the left to decrease it. You can also enter a value directly in the editbox.

*Adjustable range: -20 ~ 20 (Default: 0)*

**Contrast editbox / slider bar**

This option adjusts the contrast of the print image. Drag the slider bar to the right to increase the contrast or to the left to decrease it. You can also enter a value directly in the editbox.

*Adjustable range: -20 ~ 20 (Default: 0)*

**Saturation editbox / slider bar**

This option adjusts the saturation of the print image. Drag the slider bar to the right to increase the saturation or to the left to decrease it. You can also enter a value directly in the editbox.

*Adjustable range: -20 ~ 20 (Default: 0)*

**Cyan – Red editbox / slider bar**

This option adjusts the color balance between Cyan and Red elements. The higher you set the value, the more the Red element increase while the Cyan element decrease – and vice versa.

*Adjustable range: -20 ~ 20 (Default: 0)*

**Magenta – Green editbox / slider bar**

This option adjusts the color balance between Magenta and Green elements. The higher you set the value, the more the Green element increase while the Magenta element decrease – and vice versa.

*Adjustable range: -20 ~ 20 (Default: 0)*

**Yellow – Blue editbox / slider bar**

This option adjusts the color balance between Yellow and Blue elements. The higher you set the value, the more the Blue element increase while the Yellow element decrease – and vice versa.

*Adjustable range: -20 ~ 20 (Default: 0)*

**Unsharp mask checkbox**

Checking this checkbox enables every settings of "Unsharp mask" option.

**Amount [%] editbox / slider bar**

This option adjusts the magnitude of contrast at the edges of the print image. The higher you set the value, the sharper the print image becomes.

*Adjustable range: 25 ~ 325 (Default: 130)*

**Threshold editbox / slider bar**

This option sets threshold against the brightness change among the pixels contained in the image to determine if the unsharp mask is applied. The lower you set the value, the sharper the print image becomes.

*Adjustable range: 0 ~ 20 (Default: 10)*

**OK button**

Clicking this button fixes the settings in the "Color adjustment" window, and then close the window.

**Cancel button**

Clicking this button discards the settings in the "Color adjustment" window, and then close the window.

## Color Matching window

You can choose ICC profiles and a Rendering Intent.



### Input Profile:

Current input ICC profile name in use is displayed.

### Output Profile:

Current output ICC profile name in use is displayed.

### Set Profile... button

Clicking this button allows you to load an input ICC profile or an output ICC profile respectively.

At the "Input Profile", load an ICC profile for the input device by which the current image was created.

At the "Output Profile", load an ICC profile (S1245\_1.ICC) for the printer.

### Rendering Intent

You can choose Rendering Intent from the three options as shown in the table below.

Rendering Intent	Features
Perceptual (Photographic)	Maps color smoothly, preserving relationships between similar colors, and generally provides the best reproduction of photographs.
Relative Colorimetric (Digital Proofing)	Represents any remaining out of gamut colors by the closest match and is generally a good choice for proof print.
Saturation (CG, Logo Colors)	Prints punchy business charts and graphs, preserving the saturation or brightness of colors.

### OK button

Clicking this button fixes the settings in the "Color Matching" window, and then close the window.

### Cancel button

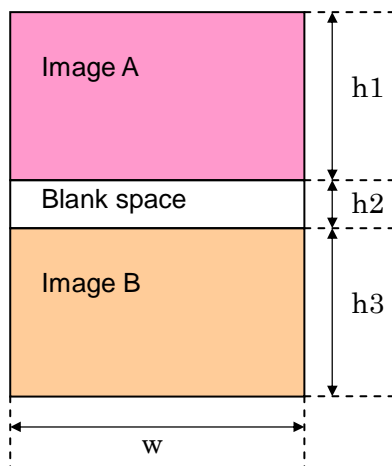
Clicking this button discards the settings in the "Color Matching" window, and then close the window.

# Split Print

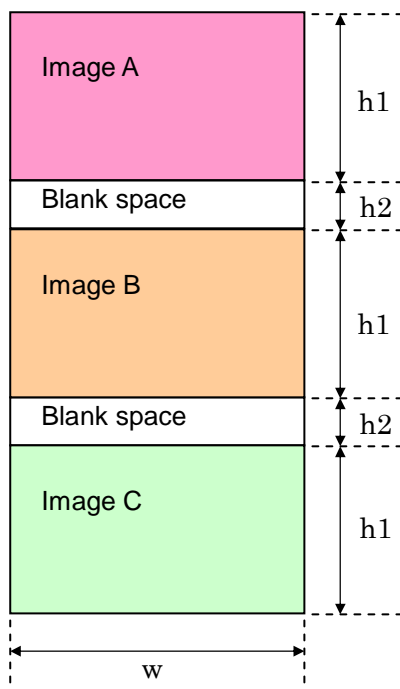
CHC-S1245 Printer Driver can perform Split Print in combination with 2 or 3 images, which are combined by certain application software. This method reduces printing time, and saves ink ribbon.

1. Combine 2 or 3 images with blank space by your application software.

The dimensions of whole and each image and blank space are shown in the table below.

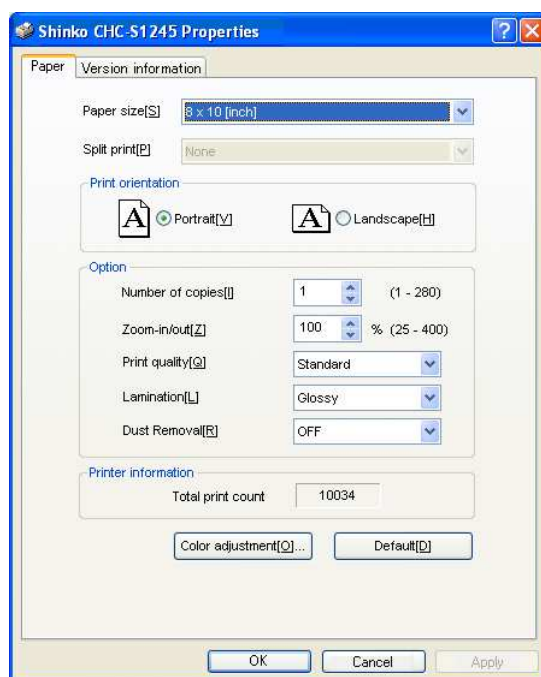


Combination of image	Image A w x h1 [Pixel]	Blank space w x h2 [Pixel]	Image B w x h3 [Pixel]
8x5 inch & 8x5 inch	2446 x 1530	2446 x 10	2446 x 1530
8x6 inch & 8x4 inch	2446 x 1229 (8x4 inch)	2446 x 10	2446 x 1831 (8x6 inch)
8x4 inch & 8x4 inch	2446 x 1229	2446 x 10	2446 x 1229
8x6 inch & 8x6 inch	2446 x 1831	2446 x 10	2446 x 1831



Combination of image	Image A,B,C w x h1 [Pixel]	Blank space w x h2 [Pixel]
8 x 4 inch & 8 x 4 inch & 8 x 4 inch	2446 x 1229	2446 x 10

2. The proper settings in the Paper-tab sheet of the "Shinko CHC-S1245 Properties" dialog box are as follows.



Combination of image	Print size	Split print	Print orientation	Zoom-in/out
8x5 inch & 8x5 inch	8 x 10 [inch] (Split print)	8 x 5 & 8 x 5 [inch]	Portrait	100 %
8x6 inch & 8x4 inch	8 x 10 [inch] (Split print)	8 x 6 & 8 x 4 [inch]		
8x4 inch & 8x4 inch	8 x 8 [inch] (Split print)	8 x 4 & 8 x 4 [inch]		
8x6 inch & 8x6 inch	8 x 12 [inch] (Split print 2UP)	8 x 6 & 8 x 6 [inch]		
8 x 4 inch & 8 x 4 inch & 8 x 4 inch	8 x 12 [inch] (Split print 3UP)	8 x 4 & 8 x 4 & 8 x 4 [inch]		

3. The image B and A or C, B and A will be printed, cut and come out from the printer in this order.

## Troubleshooting

When the printer driver displays an error message on the computer screen, refer to the following table below for its cause and correction.

Error Messages	Possible Causes	Possible Solutions
The printer is not connected.	An incompatible printer is connected to the computer.	Connect the CHC-S1245 digital photo printer to the computer with a USB cable.
Control circuit error. (xxh) Please contact service center.	A hardware malfunction may have occurred in the printer.	Consult the distributor of the printer or our support center.
Mechanical error. (xxh) Please contact service center.		
Sensor error. (xxh) Please contact service center.		
Temperature sensor error. (xxh) Please contact service center.		
Paper jam. (xxh) Please remove jammed paper.	A paper jam has occurred.	Remove the jammed paper in accordance with the user manual of the printer.
The cover is open. Please close the cover.	The printer cover is open.	Close the printer cover.
Out of ink ribbon. Please check ink ribbon.	The ink ribbon has run out or is not loaded.	Remove the used ink ribbon and load a new one.
No paper. Please load paper.	The paper roll has run out or is not loaded.	Load a new one.
Printing is not possible with the specified paper size. Please check the paper size.	The 8x10 inch size paper roll is loaded while a paper size that requires 8x12 inch size paper roll.	Load the 8x12 inch size paper roll.
In use. Please print again.	The operation panel is in use.	Exit from the "Set Up Mode" of the printer.
Can not use this profile on current ribbon and image mode.	Incorrect ICC profile(s) are specified for the current settings.	Check if the ICC profile(s) are compatible with the current settings.
Can not find right ICC Profile.	The selected ICC profile is not found; or the ICC Profile has collapsed.	Check if the ICC Profile exists and is not broken.
Can not load bitmap file.	The selected bitmap file is not supported.	Load an acceptable bitmap file that is in 24-bit full color and up to 480 pixels in height and 680 pixels in width.